



EN GER

**TRACKS IN  
GERMAN &  
ENGLISH**

**UE** University of Applied  
Sciences Europe  
Iserlohn · Berlin · Hamburg

**FOUNDATION YEAR  
(STUDIENKOLLEG)**

[www.foundationyear.de](http://www.foundationyear.de)

EN GER

**TRACKS IN  
GERMAN &  
ENGLISH**



# FIVE REASONS TO STUDY IN GERMANY

Germany is the third most popular destination among international students in the world. more than twelve percent of students at German universities come from abroad. Germany is an attractive place to study and German university degrees are highly respected by Employers worldwide.



## 1. TOP QUALITY

German universities offer excellent teaching and research, ranking among the best in the world. You will earn an internationally renowned degree, giving you excellent prospects on the global labour market.



## 2. GEARED TO PRACTICE

German universities of applied sciences offer a range of attractive, practice-oriented options. Many study programmes combine theory and practice. This will greatly facilitate your career start.



## 3. POTENTIAL UNLOCKED

In Germany you can develop your intellectual abilities and personal skills freely and reach your full potential. If you are out to achieve great things, you will need determination, motivation and commitment – both during and after your studies.



## 4. SAFE COUNTRY

In comparison with other countries, Germany is a safe country. In town or in the countryside, by day or by night, you can move around freely here. Germany offers economic and political stability, which makes it an ideal place for you to study.



## 5. DIVERSITY

Discover the beauty and diversity Germany has to offer! When you take time off from your studies, there are 1001 ways of exploring your host country. Visit a museum, the cinema or theatre or enjoy the weather in a beer garden. If you're into being outdoors, swim in a lake, climb a mountain or visit an old castle. More and more young people are choosing to study in Germany for many different reasons. These include the social security being old of the best in the world and the unemployment rate being at the lowest in Europe.

# HIGHER EDUCATION IN GERMANY

Would you like to study in Germany but don't currently have direct access to a German university?

Our Foundation Year (Studienkolleg) is a one year pre-studies programme for qualified international high school graduates without direct access to a German university.

If your secondary school examination allows you to study in your home country, but not directly in Germany, it is very likely that after the Foundation Year at University of Applied Sciences Europe and an intensive and qualified preparation for succeeding the "Feststellungsprüfung", you will have access to your chosen field of study at a German university.

To check if you have direct access to a German university, you can use the website Anabin (<https://anabin.kmk.org/anabin.html>). Anabin is a database you can use to find out how your school certificate will be evaluated in Germany.

On the Anabin website you can specify your country and certificate when searching the database. It provides all relevant information, e.g. whether your certificate will be recognised and whether you will need to fulfil further requirements.



# COURSES AND FIELDS OF STUDY

EN GER

TRACKS IN  
GERMAN &  
ENGLISH

On our Foundation Year (Studienkolleg) we offer three different courses.

The technical course (T-Course) prepares for studies in the fields of engineering and natural sciences in German language. The business course (W-Course) prepares students for studies in field relating to business and economics in both the German and English language.

The Foundation Year curricula has been conceptualised especially for the needs of the bachelor programme the student would like to apply for after the Foundation Year (Studienkolleg).

## COURSE OVERVIEW

W-COURSE (BUSINESS)	T-COURSE (TECHNOLOGY)
<p><b>prepares for fields of study such as</b></p> <ul style="list-style-type: none"> <li>• Business</li> <li>• Economics</li> <li>• Social Sciences</li> </ul>	<p><b>prepares for fields of study such as</b></p> <ul style="list-style-type: none"> <li>• Informatics</li> <li>• Engineering</li> <li>• Mathematics</li> <li>• Natural Sciences</li> </ul>
<p><b>Examinations (German track)</b></p> <ul style="list-style-type: none"> <li>• Written examination in: German, Mathematics and Economics</li> <li>• Oral examination in English</li> <li>• Mathematics and Economics are taught in German.</li> </ul>	<p><b>Examinations</b></p> <ul style="list-style-type: none"> <li>• Written examination in: German, Mathematics and Physics</li> <li>• Oral examination in Chemistry</li> <li>• All subjects are taught in <b>German</b></li> </ul>
<p><b>Examinations (English track)</b></p> <ul style="list-style-type: none"> <li>• Written examination in: English, Mathematics and Economics</li> <li>• Mathematics and Economics are taught in English</li> <li>• Oral examination in German</li> </ul>	

### 1. BUSINESS COURSE - W-COURSE (ENGLISH)

Our business course enables you to study English taught bachelor programmes in business, economics and social sciences. Therefore there is a wide variety of programs at your disposal after you have finished the Foundation Year and passed "Zugangsprüfung". If English is your first language and you are interested in business, this could be your choice!

#### DURING THE FOUNDATION YEAR YOU HAVE LESSONS IN FOUR SUBJECTS:

- **English with 12 hours per week.**  
The English lessons help you to improve your language level and be prepare you for lectures at university. The content has various touch points with those subjects that are relevant in bachelor programmes.
- **Mathematics with 6 hours a week.**  
The mathematics lessons cover those subjects that are fundamental for university courses.
- **Economics with 6 hours a week.**  
Economic theory and the relevance for today's industry and relations between economies, are part of every business-related study programme. This subject helps you to get familiar with the German and the European economy.
- **German with 6 hours a week.**  
Living in Germany and mastering daily challenges is helped by understand the language. You can start with some knowledge or from the scratch and learn to communicate with level B1 after one year.

### 2. BUSINESS COURSE - W-COURSE (GERMAN)

Are you interested in business and possess some language skills in German? Would you like to develop your language skills and study a bachelor's degree taught in German? - Then this is the course for you!

- Our business course (German) enables you to study German bachelor's programmes in business, economics and social sciences. This course offers you a large selection of study Programmes taught in German after successfully passing "Zugangsprüfung". For this course you should already have a level of B1 in German. If your level is less than required, you need to take a special language course before you start with the Foundation Year.
- During the Foundation Year in the Business Course - W-Course (German) you will visit the same lectures as in the Business Course -W-Course (English). The only difference is that you will have 12 hours per week in German and only 6 hours per week in English.

### 3. TECHNOLOGY - T-COURSE (GERMAN)

Are you interested in engineering, technical processes or natural sciences? Do you also have some German language skills? If you're looking to improve your German language skills and prepare yourself for a technical study programme, then this might be the right course for you!

Our technology course (German) enables you to study German bachelor's programmes in technical studies, natural sciences and engineering. For this course you should already have a level of B1 in German. If your level is less than required, you need to take a special language course before you start with the Foundation Year.

#### DURING THE FOUNDATION YEAR YOU WILL HAVE LESSONS IN FOUR SUBJECTS:

- **German with 12 hours per week.**  
The German lessons not only help you to improve your language level, they will also prepare you for the scientific language that is used in technical lectures at university. The course content has various touch points with those subjects in relevant bachelor Programmes.
- **Mathematics with 6 hours a week.**  
The mathematics lessons cover those subjects that are fundamental for university courses.
- **Physics with 6 hours a week.**  
Most technical studies such as engineering and natural sciences require competences in physics. Besides content that is fundamental for lectures at university, the appropriate terminology in German language will be taught as well.
- **Chemistry with 6 hours a week.**  
Natural sciences, technic and engineering have strong references to chemistry. Competences with this subject are essential to master this kind of bachelor's programme.

Over all, there are 30 lessons a week, accompanied with social, sports and learning activities throughout the week. Learning and living at Campus Iserlohn provides you with various opportunities including sport facilities, excursions to local surroundings and access to a diverse network of students. All of these help create the atmosphere for your Foundation Year. Qualified teachers will assist you while learning for the exam. Teaching at University of Applied Sciences Europe is interactive with lots of examples, exercises and business case studies.

## FINAL EXAM - "FESTSTELLUNGSPRÜFUNG"

Foundation Year (Studienkolleg) starts on 15 October and the lessons last until the end of May. The final exams ("Feststellungsprüfung") will take place in June.

You will receive your results just in time before the matriculation deadline at public universities starts (15 July). You will therefore complete your Foundation Year (Studienkolleg) in a timely manner, before your matriculation at a public university or at one of the campuses of University of Applied Sciences.

The first second and third subjects will be examined through written papers and the fourth subject will be an oral exam.

Your first exam (language subject) lasts four hours and is separated in two parts: listening and reading comprehensive (this includes scientific language and grammar).

The duration of your second and third exam is three hours and the content depends on the subject.

In your last and oral exam you will have 30 minutes to prepare a given task and present it afterwards in front of a panel.

Foundation Year (Studienkolleg) at University of Applied Sciences Europe is accredited by "Bezirksregierung Köln".

UE has official status to offer the „Feststellungsprüfung“ and all certificates have the official acknowledgement of „Bezirksregierung Köln“. By passing the exam, you will have the opportunity to apply for a bachelor's degree programme in the respective field of study that is consistent with your course during your Foundation Year. Please note that universities in Germany do not have to accept an application under all circumstances and sometimes have additional requirements.

# ENTRY REQUIREMENTS

- Completed high school diploma according to anabin\*
- The required **German** language level for admission to the Foundation year (Studienkolleg) is at least B1 (German track)
- The required **English** language level for the English track is at least B1
- Successfully pass the required admission tests and interview

\*anabin is a database you can use to find out how your school certificate will be evaluated in Germany.

On the Anabin website (<https://anabin.kmk.org/anabin.html>), you can specify your country and certificate when searching the database. It provides all relevant information, e.g. whether your certificate will be recognised and whether you will need to fulfil further requirements.

# UNIQUE EXPERIENCE

Affiliated to the University of Applied Sciences Europe, the Foundation year (Studienkolleg) offers a customised programme for students at the university campus in Iserlohn.



## REASONS TO JOIN THE FOUNDATION YEAR (STUDIENKOLLEG):

- The Foundation Year (Studienkolleg) is accredited by the district government in Cologne. It offers the Higher Education Entrance Qualification Examination ("Feststellungsprüfung") at the end of the programme which qualifies graduates to apply for a specific university degree programme at a German University.
- University of Applied Sciences Europe has 20 years of experience in higher education in Germany.
- Study courses in business and management sciences.
- Curricula developed by experts to meet the requirements of following courses of study.
- Possibility to continue higher education at University of Applied Sciences Europe in Berlin, Hamburg or Iserlohn (discount for graduates of the Foundation Year).
- High quality teaching.
- If you are learning on campus in Iserlohn, accommodation is available.
- Close connection to teachers and service departments.
- Students are integrated in campus life of the university.



# KEY FACTS

The programme provides students with a solid academic foundation in the disciplines of engineering or business studies. Moreover, students learn the German language in specialised courses.

## PROGRAMME FEES FOR THE ACADEMIC YEAR 2020/2021: € 12,500

### INCLUDED IN PROGRAMME FEES

- Qualified teachers in equipped teaching rooms
- Teaching materials
- Mentoring of students
  - Including e.g. contact person in case of illness or other matters
  - Possibility for weekend excursions (excluding travel expenses and entrance fees)
  - Leisure and sports activities
  - Use of common areas and library
- Semester ticket for public transportation
- Insurance
- All overseas services

### ADDITIONAL FEES

€ 500 exam repeating fee

LOCATION	INTAKE	DURATION	CLASS SIZE
Iserlohn	Winter intake (October)	28 weeks	max. 36 participants

The exams will take place in June. The certificate will be issued in time for the university enrolment (15 July).

### Language requirements:

For the Foundation Year, a language level of B2 or at least higher level of B1 is recommended. To ensure your successful mastery of all challenges of the Foundation Year, a pre-language course can be useful.



# LOCATION OF FOUNDATION YEAR -

## UNIVERSITY OF APPLIED SCIENCES EUROPE, CAMPUS ISERLOHN

Your Foundation Year (Studienkolleg) is located at Campus Iserlohn of the University of Applied Sciences Europe.

University of Applied Sciences Europe is private and state-accredited university and was founded in 2000 (named BiTS- Business and Information Technology School). We therefore have 20 years of expertise in developing and teaching course content on both bachelor's and master's programmes.

At the University of Applied Sciences Europe (UE), located in Berlin, Hamburg, and Iserlohn, students will explore new paths. We offer you international programmes that prepare you for the demands of tomorrow's job market through our innovative teaching formats and programmes of study. Our global network, that embraces all cultures and continents, is the gateway to an exciting career in a global, digitalised workplace – whether as a manager or in your own company. We offer courses in business, media, communication, and sports and event management, as well as in art & design, new media and new technologies. We combine entrepreneurship, creativity and international working under one roof; we recognise these are important and in demand skills in the workplace whether that be for managers, consultants, entrepreneurs, designers or artists. Take advantage of this interdisciplinary exchange and let yourself be inspired on campus.

Our professors and administration services know the needs of our students and how to assist them in reaching their given goals. Students, who are eager to learn find an optimal surrounding and have all but the best chances to pass successfully their examinations.

The environment makes the Iserlohn Campus a place of exchange - regional, national and international. Iserlohn is a city in the "Märkischer Kreis" district, in North Rhine-Westphalia, Germany. It is the largest city by population and area within the district and has lots of green places.

For more information on the city, you can visit: [www.iserlohn.de/aktuelles](http://www.iserlohn.de/aktuelles)



University of Applied Sciences Europe,  
Campus Iserlohn

# OUR CAMPUS IN ISERLOHN

Iserlohn was the first campus of University of Applied Sciences Europe - here it all began! - The spirit of entrepreneurship and community at this location is lived by academics, administration and students. The special atmosphere of this university campus - based next to the Seilersee - supports learning socialising and knowledge about German culture and way of living and working.



## OUR FACILITIES

### 33 MODERN LECTURE ROOMS

<b>LECTURE HALL</b>	<b>ARSENAL</b>
For events, conferences, reading, with up to 230 seats	Media equipment rentals such as cameras, lighting kits etc
<b>ROOM "JP MORGAN"</b>	<b>STUDIOS</b>
For up to 50 seats	Radio studio Photo studios Darkroom Green screen studio TV studio
<b>CO-WORKING SPACE</b>	<b>1 MAC POOL</b>
<b>LIBRARY</b>	<b>PLENTY OF ROOM FOR BICYCLES</b>

Germany //

51° 22' 31.69" N, 7° 42' 10.12" E

# ISERLOHN

[iːz ɐ'loːn] | Airport code: **DTM** | Currency: € **EURO** | Time Zone: **CET**

"The green city" | "The Forest City"

OFFICIAL LANGUAGE

**DEUTSCH**

(German)



70%

OF THE CITY IS  
MADE UP OF  
GREEN AREA OR  
WATER

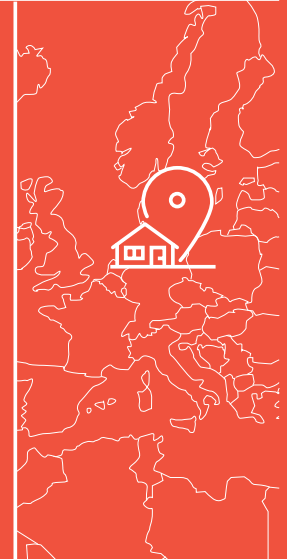
### AIRPORTS

Dortmund 22 km

Paderborn/  
Lippstadt 86 km

Düsseldorf 97 km

Cologne 103 km

384.5 m  
ÜBER NNLANDMARK  
DANZTUM

Population

96

THOUSAND  
PEOPLE{ 12% ARE  
FOREIGNERSLike the whole region, Iserlohn is  
very safe. There are no no-go areas  
in the city.

clouds  
-1-0 °C  
(30-32 °F)

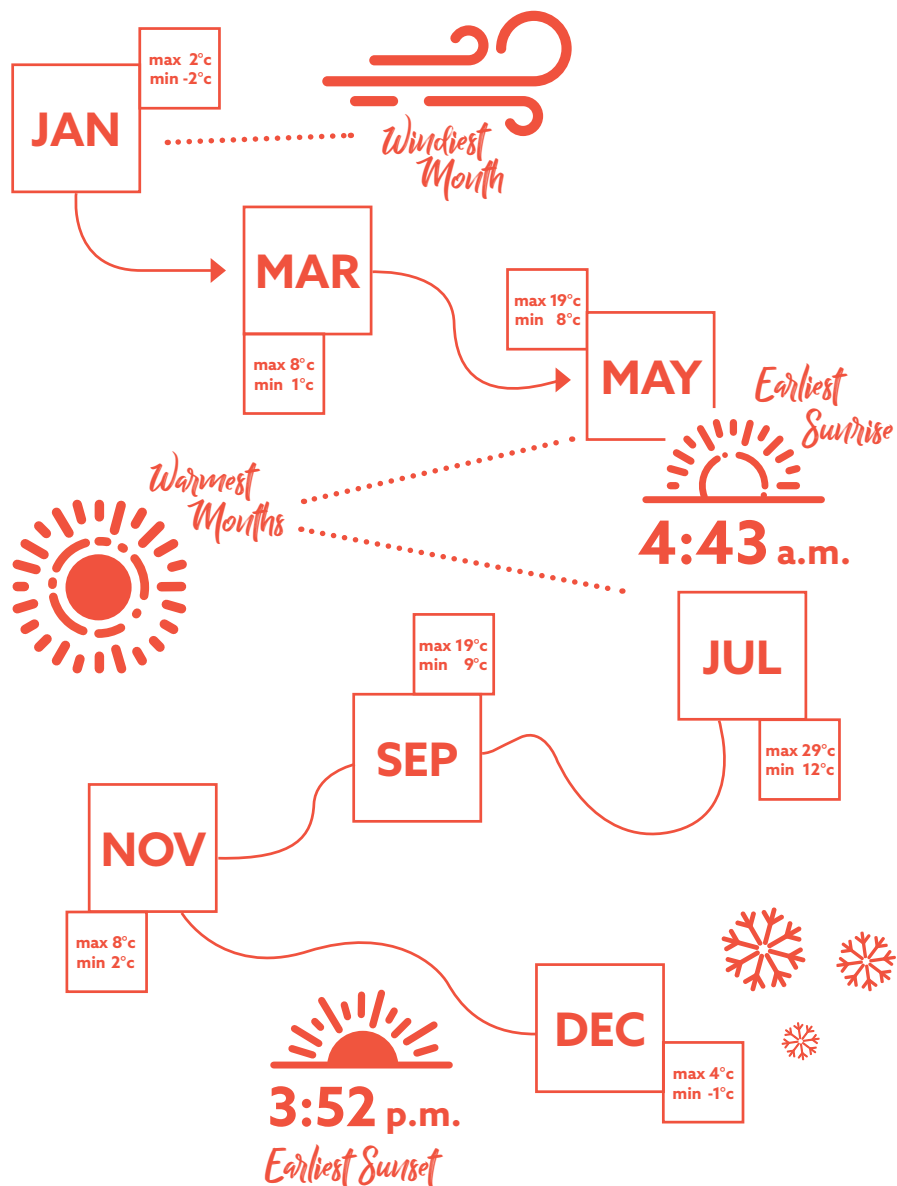
AVERAGE  
TEMPERATURE

highs  
22-29 °C  
(72-84 °F)

PEOPLE FROM OVER  
**25 DIFFERENT NATIONS ARE  
LIVING IN ISERLOHN**150 WORLD LEADERS IN INDUSTRY,  
TRADE AND SERVICES HAVE THEIR  
PLACE IN ISERLOHN

# AVERAGE WEATHER ISERLOHN

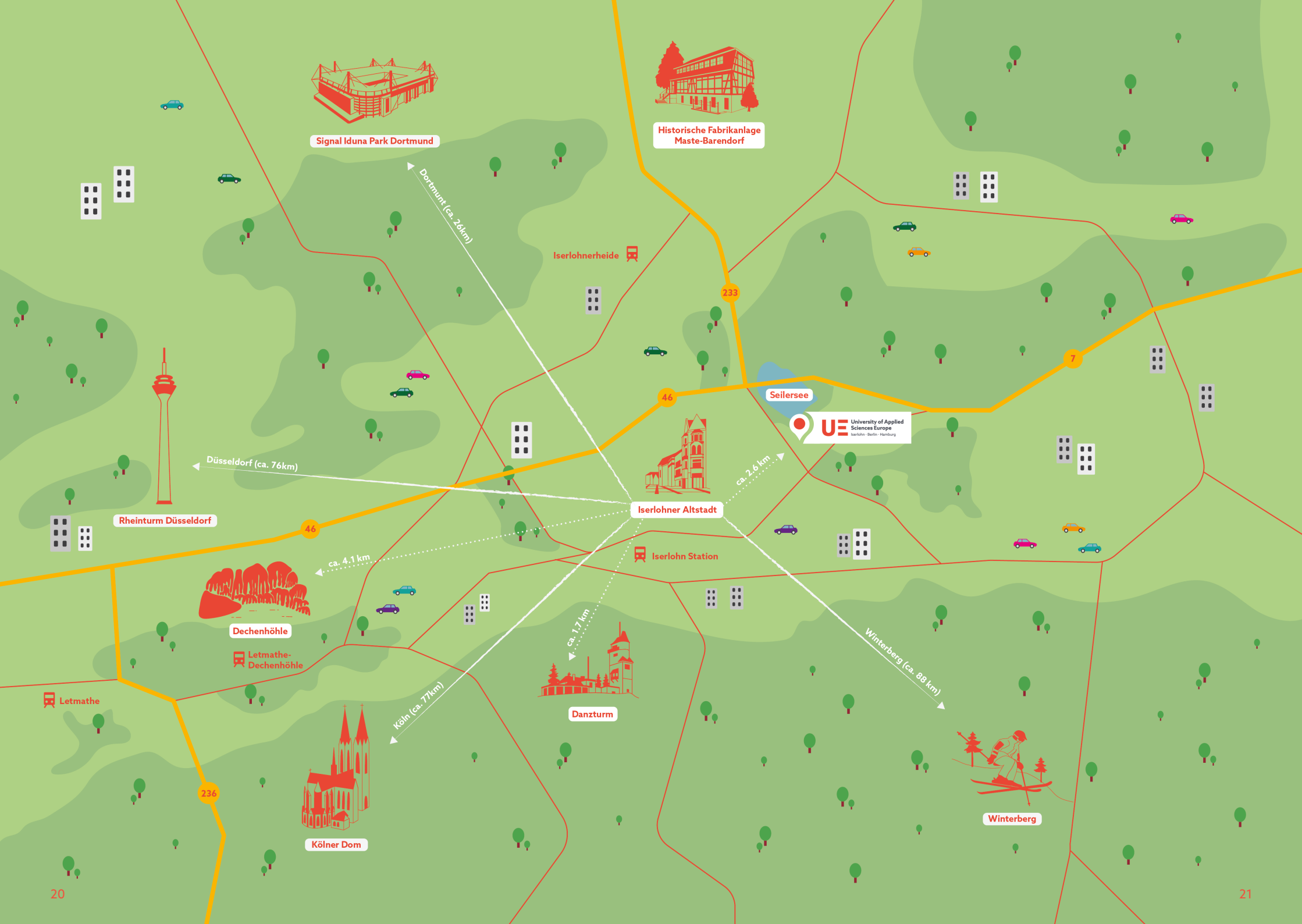
Illustration: Jacob Ferguson



# OUR WEATHER

The weather in Iserlohn is very changeable. Iserlohn has a continental climate with cold winters, hot summers and mild springs and falls. During the year, the temperature usually ranges between -1 °C and 29 °C. Summer (June to August) weather in Iserlohn is pleasant and sunny, the days are long and temperatures average 18-20°C (64-68°F), particularly in July. However, the summer months are also unpredictable and the weather can rapidly change from sunshine to overcast. It can also be fairly humid in summer in Iserlohn. Winter weather (December to February) in Iserlohn, by contrast, averages 0°C (32°F) and can be bitterly cold and damp, with snowy and frosty days when temperatures hover at or just below freezing. Although snow falls between December and March, the city seldom stays covered in snow for long. Rain can fall all year round and it is always a good idea to have an umbrella in Iserlohn, no matter what the season; the wettest month is December and the driest month is February.

[www.climate-data.org/europa/deutschland/nordrhein-westfalen/iserlohn-22975](http://www.climate-data.org/europa/deutschland/nordrhein-westfalen/iserlohn-22975)



Signal Iduna Park Dortmund

Historische Fabrikanlage  
Maste-Barendorf

Dortmund (ca. 26km)

Iserlohn Station

233

46

Seilersee

UE University of Applied  
Sciences Europe  
Iserlohn · Berlin · Hamburg

ca. 2.6 km

Iserlohn Altstadt

Düsseldorf (ca. 76km)

Rheinturm Düsseldorf

ca. 4.1 km

Dechenhöhle

Letmathe-  
Dechenhöhle

Letmathe

Danzturm

ca. 1.7 km

Köln (ca. 77km)

Kölner Dom

Winterberg (ca. 88 km)

Winterberg

236

# TOURIST ATTRACTIONS

Illustrations: Sophia Arlt

Iserlohn has many cultural sights and exciting attractions to offer. The following places are just some selected locations of Iserlohn and bigger cities nearby.



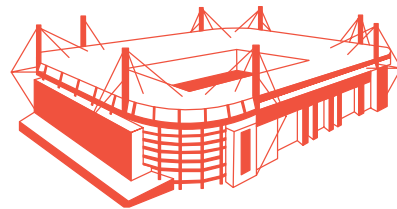
1.

The Cologne Cathedral is the landmark of Cologne and the center of the city. It is considered the second highest church in Germany.



2.

The Rhine Tower is a television tower in Dusseldorf. It is the tallest building in the city and the tenth highest television tower in Germany.



3.

The Signal Iduna Park Dortmund is one of the most famous football stadiums in Europe and is renowned for its atmosphere. It is Germany's largest football stadium.

4.



Winterberg is a ski resort in the Sauerland and a winter sports paradise for skiers, sledders and snowboarders.

5.



The Seilersee has its place next to the university. It is located in the middle of the green, surrounded by forests, not far from the city. The area offers rowing and pedal boating, mini golf and swimming pools. People can walk on well-maintained paths around the lake.

6.

The Dechenhöhle in Iserlohn is one of the most visited and beautiful stalactite caves in Germany.



7.



The Danz tower is 28 m high with a viewing platform, which gives a magnificent view over the Sauerland low mountain range. The Danzturm is located in the middle of the city forest.

8.

The historic Maste-Barendorf factory complex is a cultural monument in Iserlohn. A needle museum was set up to give an insight into Iserlohn's previously important industrial needles manufacturing industry.



# PUBLIC TRANSPORTATION

Iserlohn has the following transportation options: buses and trains.

The local transport system is mainly operated by buses of the regional transportation company MVG ([www.mvg-online.de](http://www.mvg-online.de)) and VRR. Buses not only operate different routes within the city, but also go to neighbouring towns.

- Rail traffic of the DB Regio NRW and the Abellio Rail NRW: 6 stations and stops
- Very good transport links to the motorway (A46 driveway next to the campus)

# SPORT ACTIVITIES IN ISERLOHN

In Iserlohn, our students can take advantage of a wide range of sports. The city offers: American football, ice-hockey, handball, football (soccer), (table-)tennis, basketball and swimming.

Sports facilities can be found directly at the university campus as well as in town.

More information can be found here:

[www.iserlohn.de/sport/sportarten-vereine](http://www.iserlohn.de/sport/sportarten-vereine)



# HOUSING IN ISERLOHN

For smaller towns Iserlohn is a metropolis, for other neighboring cities the restful forestcity. Iserlohn combines urban life and nature in an ideal way.

Flat hunting in Iserlohn is easier compared to other big cities. For a good price you can rent a nice, spacious apartment.

The average price for a room in a shared flat is 250-350 EURO.



Picture taken from: [de.wikipedia.org/wiki/Iserlohn](https://de.wikipedia.org/wiki/Iserlohn)

## MONTHLY LIVING COSTS

Housing (shared flat)	€ 250 – € 450
Telephone, Internet, Radio and TV	€ 50
Food	€ 300
<b>Approx. living costs per month*</b>	<b>€ 550 – € 850</b>

The average rental price in Iserlohn is 11.40 EURO / m<sup>2</sup>.

\* The amounts given above are estimates only and the monthly budget is, of course, variable and depends on the needs and living standards of each individual student.





## TEMPORARY ACCOMMODATION

### Shared flats:

WG-gesucht	<a href="http://www.wg-gesucht.de">www.wg-gesucht.de</a>
WG Company	<a href="http://www.wg-company.de">www.wg-company.de</a>
WG Liste Studenten	<a href="http://www.wg-liste.de">www.wg-liste.de</a>

### Your own flat:

Immoscout 24	<a href="http://www.immobilienscout24.de">www.immobilienscout24.de</a>
Wohnraumkarte	<a href="http://www.wohnraumkarte.de">www.wohnraumkarte.de</a>
Housing Anywhere	<a href="http://www.housinganywhere.com">www.housinganywhere.com</a>
Immowelt	<a href="http://www.immowelt.de">www.immowelt.de</a>
Immonet	<a href="http://www.immonet.de">www.immonet.de</a>
Ebay Kleinanzeigen	<a href="http://www.ebay-kleinanzeigen.de">www.ebay-kleinanzeigen.de</a>
Thallos AG	<a href="http://www.thallos.ag">www.thallos.ag</a>

## FACEBOOK AND WEBSITES

Student group - BiTS Studenten

[www.facebook.com/groups/214329295329160/](https://www.facebook.com/groups/214329295329160/)

Searching for a flat in Iserlohn

[www.facebook.com/groups/513729695325497/?ref=search](https://www.facebook.com/groups/513729695325497/?ref=search)

Temporary shared flats or apartments

[www.ebay-kleinanzeigen.de/s-auf-zeit-wg/iserlohn/c19911735?gclid=EAlaI QobChMz9HRvtOG4wIVkuR3Ch1XNAHoEAAyAIAAEgKHI fD\\_BwE](https://www.ebay-kleinanzeigen.de/s-auf-zeit-wg/iserlohn/c19911735?gclid=EAlaI QobChMz9HRvtOG4wIVkuR3Ch1XNAHoEAAyAIAAEgKHI fD_BwE)

Shared flats or apartments

[www.wg-gesucht.de/wg-zimmer-in-Iserlohn.226.0.1.0.html](http://www.wg-gesucht.de/wg-zimmer-in-Iserlohn.226.0.1.0.html)

Housing Exchange

[www.wohnungsboerse.net/Iserlohn/wg-zimmer-provisionsfrei](http://www.wohnungsboerse.net/Iserlohn/wg-zimmer-provisionsfrei)

## SHORT STAYS

(FOR YOUR FIRST WEEKS OR YOUR VISITORS)

Airbnb	<a href="http://www.airbnb.com">www.airbnb.com</a>
Booking	<a href="http://www.booking.com">www.booking.com</a>
Literaturhotel Franzosenhohl	<a href="http://www.literaturhotel-franzosenhohl.de">www.literaturhotel-franzosenhohl.de</a>
Campus Garden Business Hotel	<a href="http://www.campus-garden.de">www.campus-garden.de</a>
STADT HOTEL	<a href="http://www.stadthotel-iserlohn.de">www.stadthotel-iserlohn.de</a>

## HELPFUL TIPS

Watch out for apartment frauds - as a rule, do not transfer any money to the landlord before you have the contract, meeting him/her in person, or before you have seen the apartment.

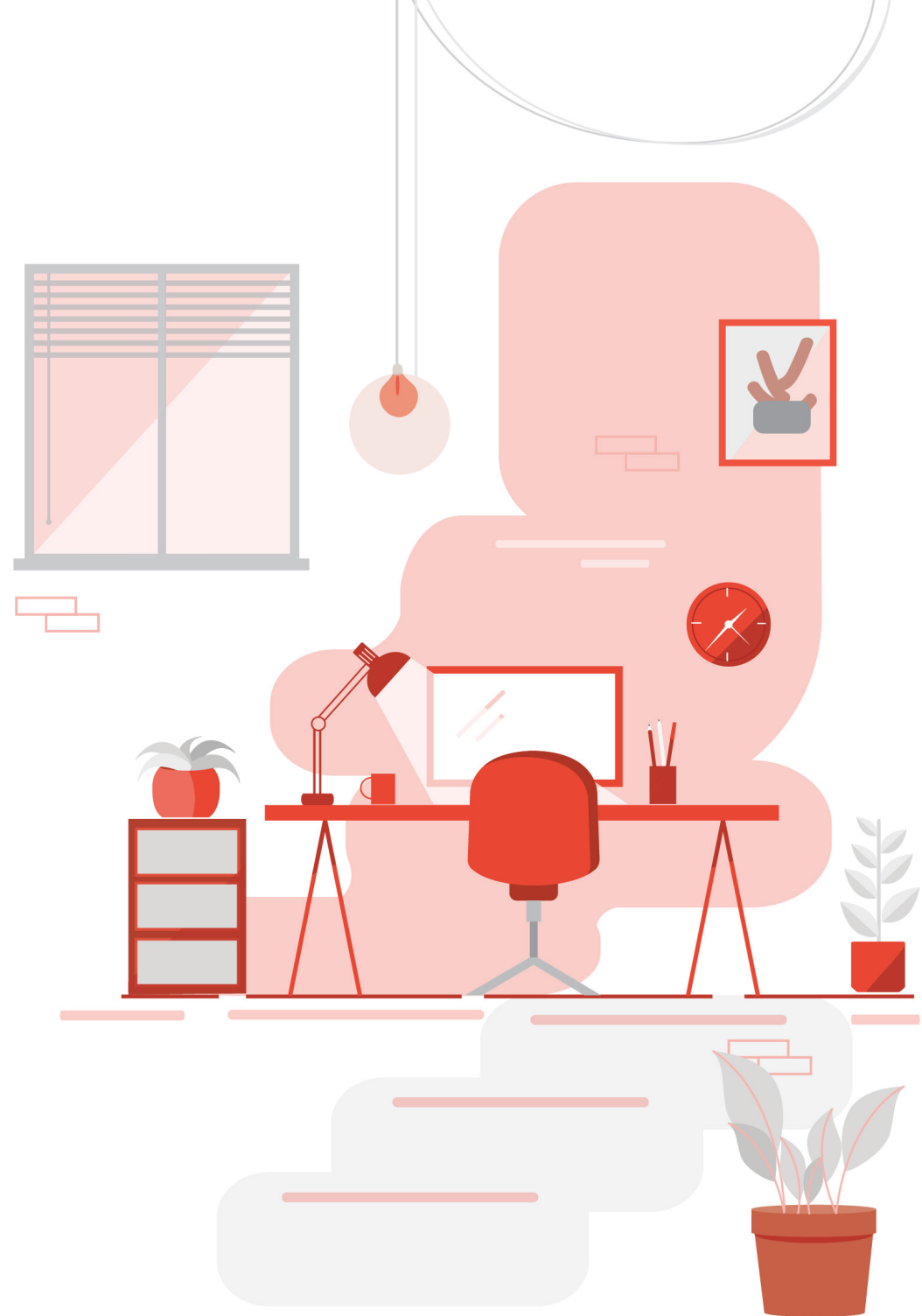
# ACCOMMODATION ON CAMPUS

You can also live on our campus in Iserlohn. The apartment house is located at the opposite side of the university.

The building, which was used as an office building until autumn 2016, was completely renovated at the end of 2016 and converted into an apartment building. There are 29 apartments with room sizes of approx. 24-39 qm with spacious bathrooms (including showers and WC) and storerooms. Furthermore, on the first floor there is a common room and a laundry room with washing machines and dryers (use with coins). The apartments are equipped with satellite TV and internet connection.

- ❑ A barrier-free apartment is offered in a room size of approx. 50 qm with a correspondingly large bathroom. A stairlift is available.
- ❑ Parking lots as well as parking lots for bicycles are available on the nearby parking lot.
- ❑ The apartment house is managed by a professional property manager (caretaker service on campus).
- ❑ The rental costs are around EURO 15/ qm.

**For more information please get in contact with Thallos AG. They are available via phone: +49707192 0 99 – 0 or via mail: [info@thallos-service.de](mailto:info@thallos-service.de)**



# THE PATH TO YOUR FUTURE

Apply for admission at  
University of Applied  
Sciences Europe (Hamburg,  
Berlin or Iserlohn) or any  
other German University\*

Study for one year in our  
Foundation Year  
(Studienkolleg) in Iserlohn

Gain admission and  
visa for Germany

Apply for Foundation Year  
(Studienkolleg) of UE with  
your secondary school  
certificate

Pass the  
final exam



\* No guaranteed admission

# WELCOME TO OUR CAMPUSES

Our T- and W courses are taught in German which allows students to access study programmes at a range of German universities. The W-Courses taught in English provide access to study programmes taught in English in North-Rhine Westphalia.

The University of Applied Sciences Europe welcomes all graduates of the Foundation Year to its campuses in Iserlohn, Berlin and Hamburg. The offered programmes of studies can be found under: [www.ue-germany.com](http://www.ue-germany.com)



University of Applied Sciences Europe,  
campus Berlin



University of Applied Sciences Europe,  
campus Hamburg



EN GER

**TRACKS IN  
GERMAN &  
ENGLISH**

[www.foundationyear.de](http://www.foundationyear.de)



CREATE  
YOUR STORY  
**INSPIRE**  
**THE WORLD**

**FOR MORE INFORMATION**

[www.foundationyear.de](http://www.foundationyear.de)

## **CONTACT**

**SALVIN ALI**

E-mail: [salvin.ali@ue-germany.com](mailto:salvin.ali@ue-germany.com)

Phone: +49 30 338 539 786